



GMT MONTHLY MEMBERSHIP PROGRESS REPORT

Results as of: 5/31/2017

Multiple District 8

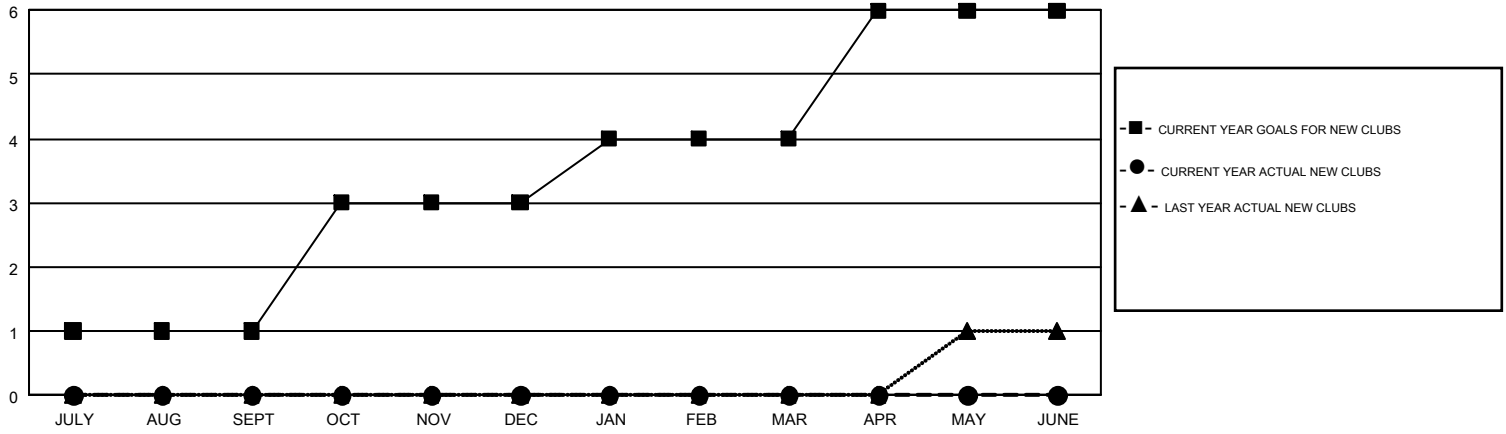
LOCATION: LOUISIANA

GMT: HAL GRIFFIN

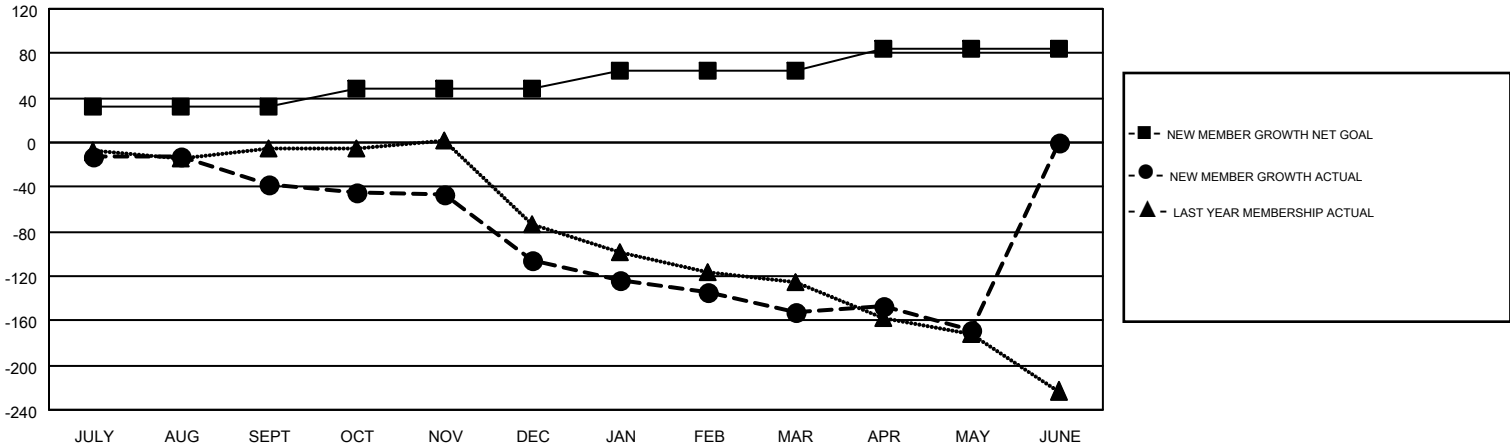
GMT CA 1

Clubs				Members			
RESULTS FOR 2016-2017				RESULTS FOR 2016-2017			
QUARTER	NEW CLUB GOAL	NEW CLUBS	DROPPED CLUBS	QUARTER	NEW MEMBER GROWTH NET GOAL (not reinstated or transfers)	NEW MEMBER GROWTH ACTUAL (not reinstated or transfers)	DROPPED MEMBERS ACTUAL (including transfers)
JULY/AUG/SEPT	1	0	2	JULY/AUG/SEPT	33	114	152
OCT/NOV/DEC	2	0	3	OCT/NOV/DEC	16	61	129
JAN/FEB/MAR	1	0	0	JAN/FEB/MAR	16	79	125
APR/MAY/JUNE	2	0	0	APR/MAY/JUNE	20	73	89

GOALS AND ACTUAL NEW CLUBS CUMULATIVE



GOALS AND ACTUAL MEMBERS CUMULATIVE



DROPPED CLUBS: 5	86 CLUBS OF 156 ADDED 1 OR MORE NEW MEMBERS	GENDER DISTRIBUTION MALE 2,987 (69.56%) FEMALE 1,307 (30.44%)
DROPPED MEMBERS DECEASED 57 CLUB CANCELLED 67 OTHER 371 TOTAL 495	CLICK HERE FOR CUMULATIVE MEMBERSHIP DATA	TOTAL FAMILY UNIT MEMBERS 755 FAMILY MEMBERS PAYING HALF DUES 392